



CODENAME
LIGHTHOUSE
IN THE CITY

@ MEDOWS, THANE



CODENAME

LIGHTHOUSE IN THE CITY

@ MEDOWS, THANE

The joy of Belongingness

Lighthouse in the city opens up a fabulous, intimately magical world of belongingness to you and your family. A home that's designed and situated to create a lifetime of joyful moments, blooming with cherished memories.

Call it proximity, intuitive design, spacious homes, a sense of deep familiarity or the pride of being in the buzz of Thane's finest social infrastructure - Lighthouse fills the canvass of life with the joy of belongingness.





Small, little moments, like wildflowers create a mosaic of joy, and life becomes a meadow full of happiness at codename lighthouse.

Just the way a riot of colours, blooming wild flowers, birds of myriad plumes and all the amazing hues of green make a meadow creates a vibrant habitat for happy moments to blossom.



Life here brings you close to Thane's high-street shopping, trendy eateries, business hubs, health centers, top schools, and more creating a true meadow of happiness for you and your family.

There's something captivatingly delightful about having your home nestled in the heart of the Meadows at Lighthouse in the City.



Experience an enriching and joyful life as you become part of one of the most vibrant communities at Lighthouse in the City. It's a location that embodies the lively buzz of Thane, yet captures the quaint charm of tree-lined pathways and parks.



The radius of Connectivity for The wealth of time



The radius of Connectivity for The wealth of time



Malls

Wonder Mall	1.4 KM
Viviana Mall	3.5 KM
Lodha Bouleavrd	3.5 KM
Korum Mall	5.3 KM

Schools

DAV Public School	1 KM
Carmel High School	2.5 KM
DSV CBSE School	3.2 KM
CP Goenka School	3.5 KM

Hospitals

Titan	2.2 KM
Bethany	2.6 KM
Jupiter	3.4 KM
TMC Hospital	3.4 KM

Recreation Areas

Tikuji-Ni-Wadi	2.4 KM
Upvan Lake	2.8 KM
Suraj Water Park	4.5 KM

Coming soon

- Road tunnel connecting Tikuji-ni-wadi at GB Road to Borivali
- Plans for Wadala-Kasarvadavali Metro line 4, Kapurbawdi- Bhiwandi Metro Line 5
- Development of Vitawa Bypass Road, connecting Kopri to Thane-Belapur Road
- Proposed Thane-Bhiwandi-Kalyan Monorail
- Proposed Manpada Metro Station within 5 minutes walking distance from Lighthouse

Inspiring design, Invigorating spaces

Aesthetically designed exterior environs, immersive green play, spread of amenities, subtly elegant towers and an attention to detail that inspires your home interiors— Lighthouse is conceived to invigorate moments.

Master Layout

Ground Floor Amenities

- Entry/exit Gate Along With Pedestrian Gate
- Vehicular Access Ramp To First Floor
- Multipurpose Area
- Grand Entrance Lobby
- Parallel Bars For Exercise And Play

Second Podium Floor Amenities

- Amenities Like Library, Creche, Gym & Business Lounge.
- Kids Play Area
- Society Office

E-deck Floor Amenities

- Adult Semi Olympic Size Lap Pool
- Kids Pool
- Changing Rooms
- Clubhouse With Indoor Games & Badminton Court
- Pool Side Cafe
- Yoga/Meditation Deck And Sunken Seating
- Pool Deck
- Jogging Area

Terrace Floor Amenities

- Sky Gym
- Yoga/Zumba Deck
- Sky Lounge
- Seating Areas
- Reflexology Path
- Cabanas
- BBQ Deck
- BBQ Counter

Other Amenities

- Aluminium Formwork Technology
- STP
- Rainwater Harvesting
- Generator Backup To Lift, Water Pumps And Common Area Lighting.
- Multilevel Car Parking
- Video Intercom Facility
- CCTV In Common Area



36 storey new age Towers

ARTIST'S IMPRESSION



Your City Escape: A Private Deck





PARANJAPE®

The Spirit Of New India




**Swanky clubhouse, swimming pool
& Centaurus – an enriching landscape**



PARANJAPE[®]
— The Spirit Of New India —





CODENAME
LIGHTHOUSE
IN THE CITY
© MEDOWS, THANE


Yoga Deck

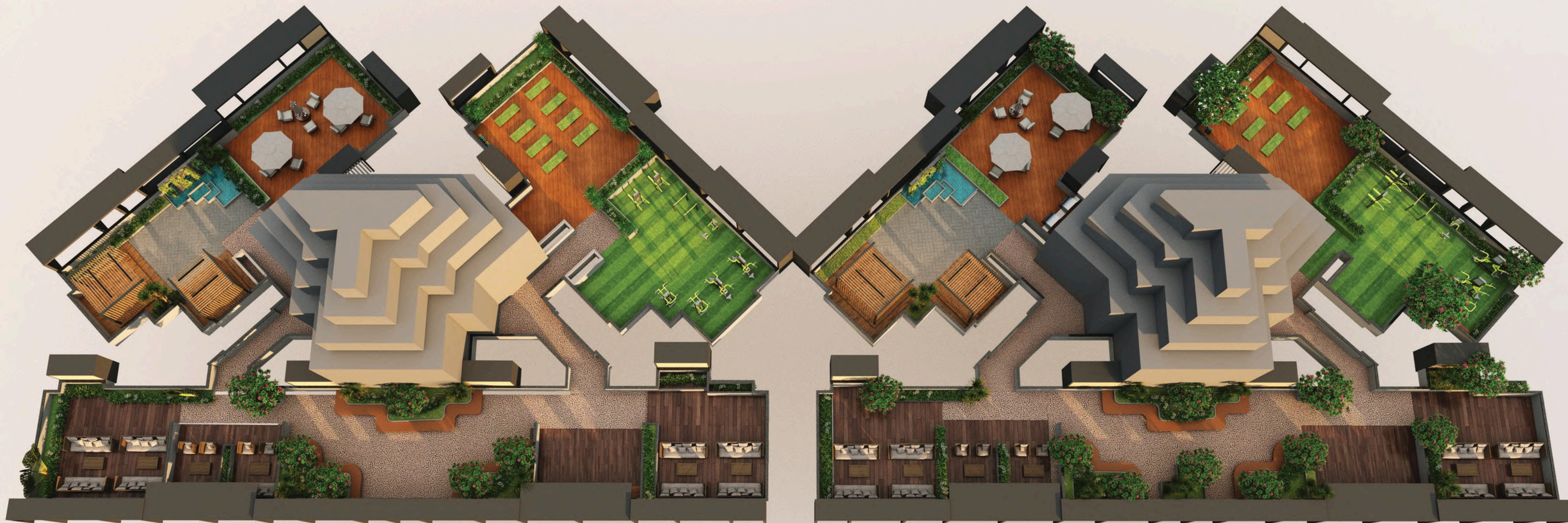

Pool


Landscape
garden


Poolside
cafe

Endless Fun.





**Exclusive rooftop: your open-air
fitness and fun destination.**



Sky-Gym



Yoga/ Zumba
Deck



Sky
Lounge



Cabanas



BBQ
Counter



Sweat is a sweet reward.



Play, Laugh, and Grow Together.



Gym



Jogging area



Zumba centre



An artist's impression



**Ponder, play, connect to the wonder
of living**



Library



Crèche



Indoor
games



PARANJAPE[®]
— The Spirit Of New India —



Artist Impression



E-Deck: Connect, live and enjoy.



Pool Pool



Badminton
Court



Jogging
area



Meet, host, engage and do more



PARANJAPE

The Spirit Of New India



CODENAME
LIGHTHOUSE
IN THE CITY

@ MEDOWS, THANE

**A balcony to the
Forest air**



Building - S1
TYPICAL FLOOR PLAN
 3rd to 5th,
 7th to 10th,
 12th to 15th,
 17th to 20th,
 22nd to 25th,
 27th to 30th,
 32nd to 35th

Flat No.	Type	CARPET AREA	
		SQ.M	SQ.FT
1	3 BHK	82.13	884
2	2 BHK	68.00	732
3	2 BHK	60.29	649
4	2 BHK	60.20	648
4	2 BHK	60.20	648
6	2 BHK	60.29	649
7	2 BHK	67.63	728
8	3 BHK	82.78	891



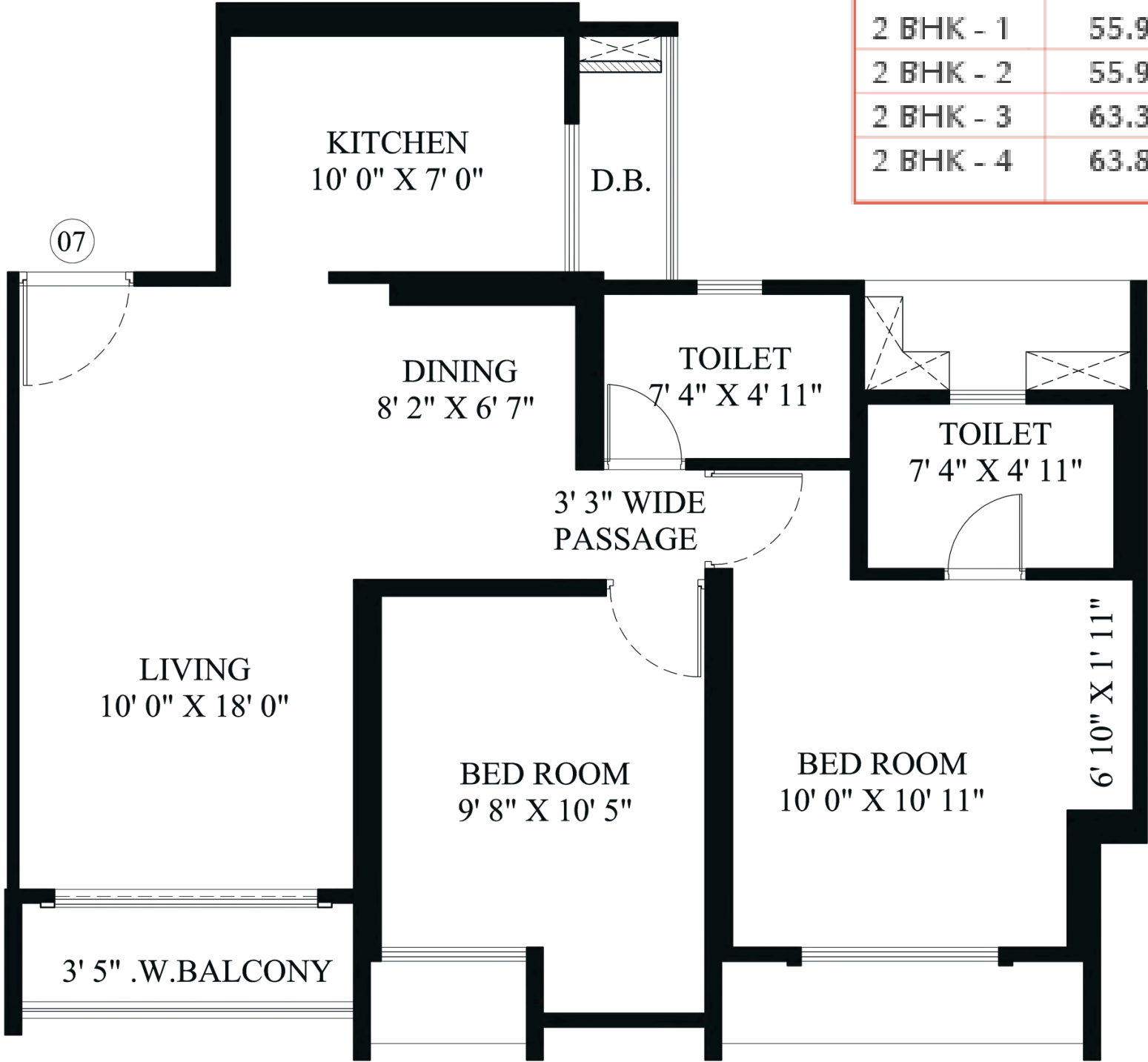
Building - S1
TYPICAL (REFUGEE FLOOR) PLAN
6th, 11th, 16th, 21st, 26th, 31st & 36th)



Flat No.	Type	CARPET AREA	
		SQ.M	SQ.FT
1	3 BHK	82.13	884
2	2 BHK	68.00	732
3	Refugee Floor		
4	2 BHK	60.20	648
4	2 BHK	60.20	648
6	2 BHK	60.29	649
7	2 BHK	67.63	728
8	3 BHK	82.78	891



Type	Flat Area	SS	Balcony	C.A Sqmtr.	Flat Area	SS	Balcony	C.A Sqft.
2 BHK - 1	55.95	1.56	2.72	60.23	602.25	16.79	29.28	648
2 BHK - 2	55.97	1.56	2.72	60.25	602.46	16.79	29.28	649
2 BHK - 3	63.37	1.50	2.72	67.59	682.11	16.15	29.28	728
2 BHK - 4	63.82	1.50	2.72	68.04	686.96	16.15	29.28	732



TYPICAL 2BHK LAYOUT
(S1 TOWER)





CODENAME

LIGHTHOUSE

IN THE CITY

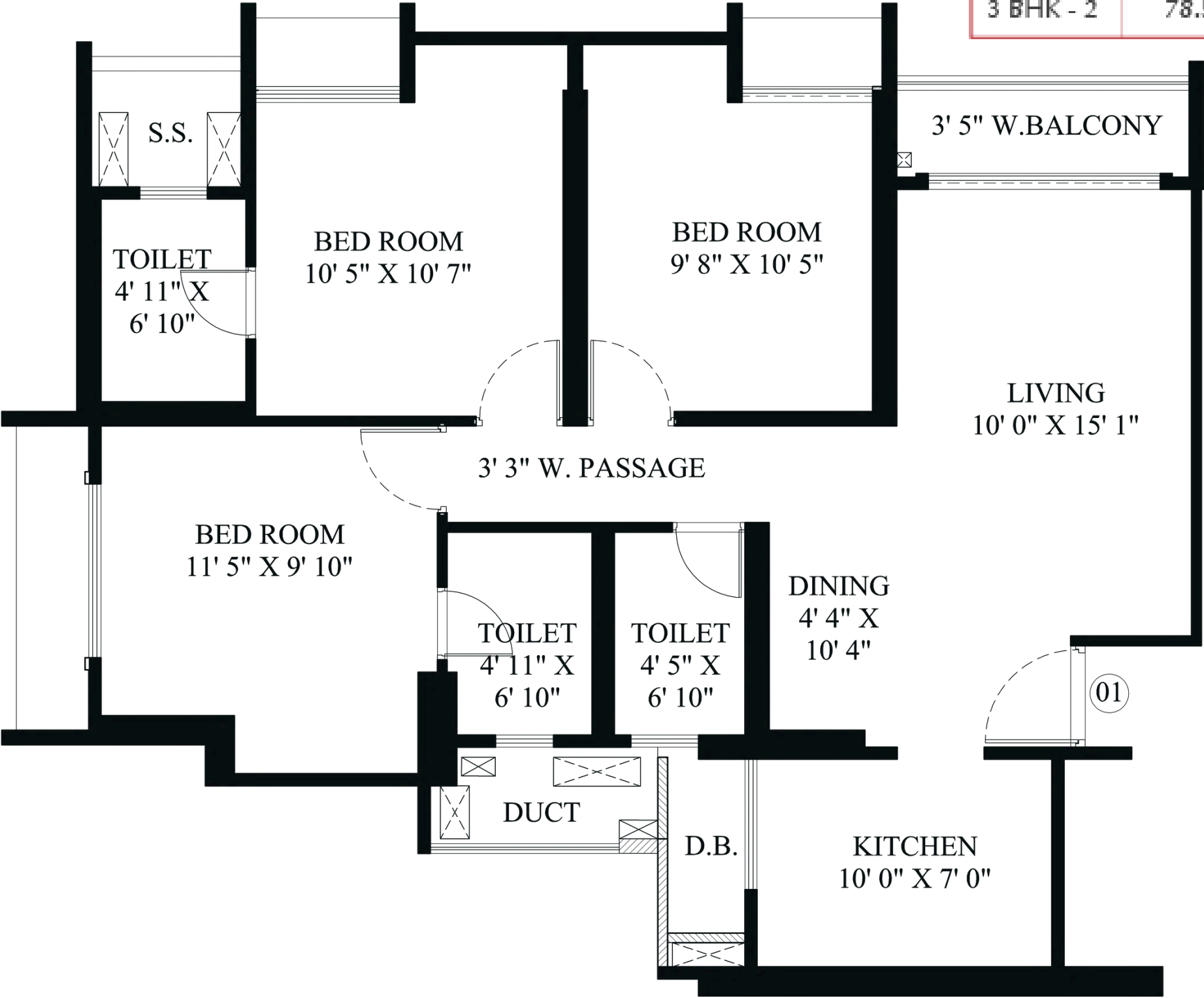
@ MEDOWS, THANE

◀ 2 BHK Smart & Elegance

Maharera Number: OPULUS S1 S2 R1 R2 and R3: P51700022773. For more details visit: maharera.mahaonline.gov.in

We are offering for sale, unfurnished apartments not including add-ons such as furniture and fixtures, unless specifically incorporated in the Agreement for Sale. Maximum Variance (+/-) 3% in RERA carpet area may occur on account of planning constraints / site conditions / column / finishing. All these dimensions are unfinished structural dimensions. In toilet the carpet area is inclusive of ledge walls. This plan is for space planning purpose only.

Type	Flat Area	SS	Balcony	C.A Sqmtr.	Flat Area	SS	Balcony	C.A Sqft.
3 BHK - 1	77.95	1.48	2.72	82.15	839.05	15.93	29.28	884
3 BHK - 2	78.50	1.56	2.72	82.78	844.97	16.79	29.28	891



TYPICAL 3BHK LAYOUT
(S1 TOWER)



@ MEDOWS, THANE

◀ 3 BHK

Maharera Number: OPULUS S1 S2 R1 R2 and R3: P51700022773. For more details visit: maharera.mahaonline.gov.in

We are offering for sale, unfurnished apartments not including add-ons such as furniture and fixtures, unless specifically incorporated in the Agreement for Sale. Maximum Variance (+/-) 3% in RERA carpet area may occur on account of planning constraints / site conditions / column / finishing. All these dimensions are unfinished structural dimensions. In toilet the carpet area is inclusive of ledge walls. This plan is for space planning purpose only.

PSCL: Evolving for superior habitas

Paranjape Schemes (Construction) Ltd (PSCL) is an ever-evolving real estate company which reflects the spirit of a modern and innovative India. Three decades' track record of customer care and trust has seen PSCL emerge as one of India's leading real-estate companies.

Diversified Offerings:

Commercial | Residential | Integrated retirement homes

Expanding Footprint:

Pune | Mumbai | Nashik | Kolhapur | Chiplun | Ratnagiri
Bengaluru | Vadodara



Become a part of the Happiness Network of 75,000 families

When you are a part of any Paranjape project, you are welcomed into a vibrant and a lively community, 'The Happiness Network' – it reflects the spirit of New India where diverse people come together to form one harmonious community.

Happiness Network Card - Enjoy benefits, privileges, discounts and offers across retail outlets, restaurants etc.

Community events - Paranjape Schemes Premier League, Ganarang, Anandghan and much more.

Be in the neighbourhood where happiness blossoms

Experience the joy of belongingness & community.
Build a future for your family in an immaculately designed space,
thoughtfully curated amenities and soothing harmony of nature, in a
neighbourhood worth calling home.

Paranjape : Hall of fame

